

# FACT SHEET



## \_WEATHER

☁️ SPRING | ▲ 20°C  
▼ 15°C

☀️ SUMMER | ▲ 32°C  
▼ 18°C

☁️⚡ AUTUMN | ▲ 17°C  
▼ 12°C

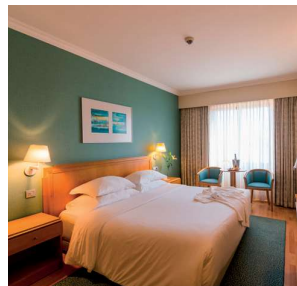
☁️ WINTER | ▲ 15°C  
▼ 9°C

## LOCATION

Strategically located near the Praça de Espanha and Sete Rios (Lisbon Zoo), the SANA Metropolitan Hotel enjoys excellent access and proximity to the public transport network, including several metro and train lines. Ten minutes from the Marquês de Pombal and the Lisbon Baixa district, the Hotel enjoys a privileged location near the main football stadiums, shopping centres and university area of Lisbon

## SERVICES & FACILITIES

4 Twin rooms for guests with reduced mobility | 5 lifts | Electricity: 220 volts | Air conditioning | Breakfast room | Business centre | Wireless Internet | Laundry / Dry cleaning | Car park | Valet parking | Multilingual staff | 24 h reception | Babysitting | Cash machine (ATM) | Currency exchange | City tours | Rent-a-car | Newsagent and souvenir shop | Tour desk | Gymnasium



## BEDROOM & SUITES

The Hotel has 315 rooms with cosmopolitan and elegant décor

53 Doubles | 128 Twin Flex | 125 Twin | 9 Suites

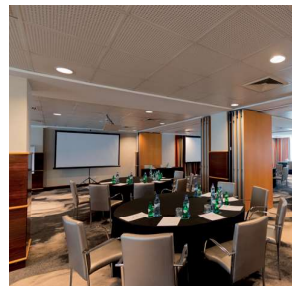
**Services & Facilities**  
Air conditioning with individual remote control | Wireless Internet | Side table/Desk | Digital safe | Full HD LCD screen | Cable television | Magnifying/make-up mirror | Hair dryer | One 110 volt plug for shaver in the bathroom | Telephone | Minibar | 24 h Room service | Wake-up call | Double-glazed windows | USB plugs for charging devices



## BARS & RESTAURANTS

The Wall Street Bar is the ideal place to relax after a day at work, to the sound of live piano.

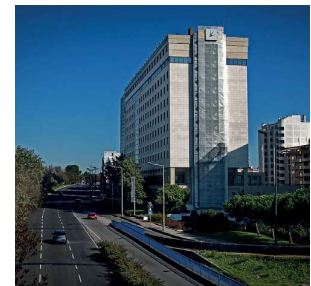
At the Astrolábio Restaurant you can savour the best in Portuguese cuisine with its refined aromas, or simply start off the day well with a hearty and varied buffet breakfast.



## MEETING ROOMS

12 Meeting Rooms with natural light, measuring 1,750m2 with a maximum capacity of 800 people.

**Services & Facilities**  
Air conditioning with individual remote control | Wireless Internet in all Meeting Rooms and public areas | Blackout curtains | Moveable partitions | Lectern, audiovisual equipment and flower arrangements available (by prior request) | Hospitality Desk next to the meeting room or in Lobby (check-in)



## NEARBY

Lisbon Zoo  
Praça Marquês de Pombal  
Parque Eduardo VII  
Estufa Fria  
Jardim Botânico  
Parque Natural de Monsanto  
Calouste Gulbenkian Foundation & Gardens  
UCI El Corte Inglés  
Galerias Twin Towers  
Lusomundo in the Colombo Shopping Centre  
Teatro Aberto