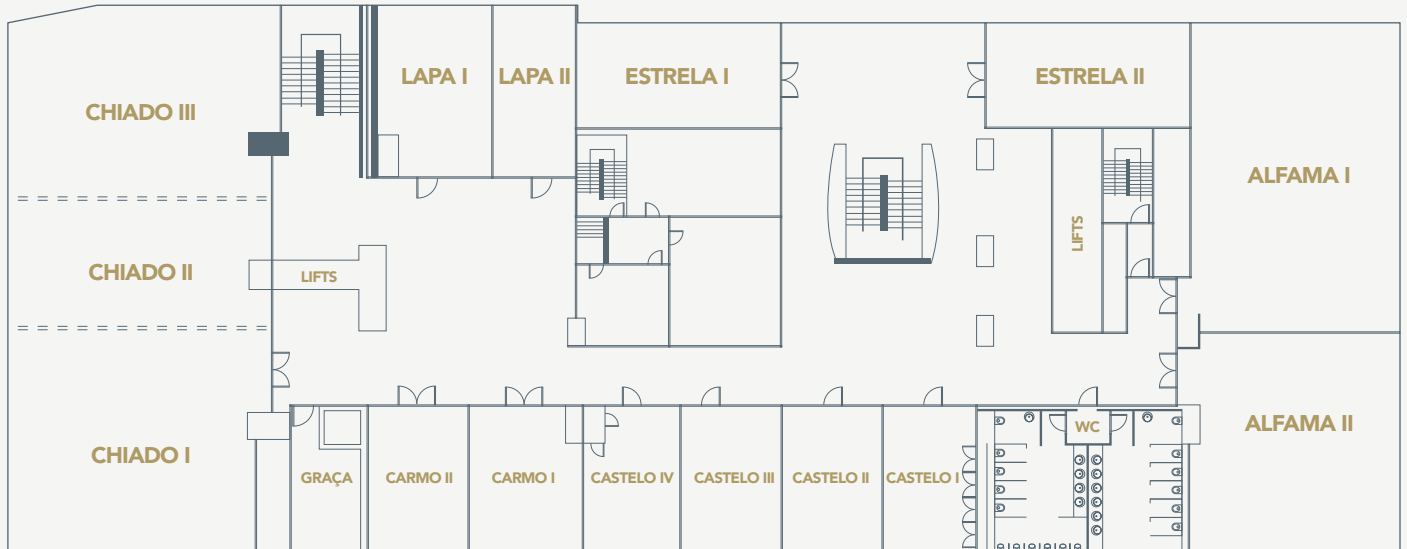


FLOOR - 1



DIMENSIONS

Total Area: 2.450 m² (gross floor area)
Length: 89 m
Width: 29 m
Height: 3,5 m

ACCESSES

1 Central Stairway
7 Lifts

DOORS

Width: 90cm (each panel)

AIR CONDITIONING AND LIGHTING

Temperature control: Automatic
Natural Daylight: Yes
Blackout: Yes
Lighting control: Yes

WI-FI

Clients' Network with 1Gbps bidirectional bandwidth

POWER SUPPLY

5 X 63A three-phase power plugs: Chiado I, II and III; Alfama I and II (1 per room)

SIGNAGE

Digital: Yes
All rooms with digital screen at the door (22" FHD – portrait layout)

LED WALL

2 – Chiado I and Alfama I (4,5 m X 2,5 m FHD)

SCREENS

Built-in Screens: 6
- Chiado II, Chiado III, Estrela I, Estrela II and Lapa I (3,5m X 2m)
- Alfama II (4,5m X 2,5m)
Portable Standing Screens: 1
- Lapa II (75")
Wall mount screens: 6
- Carmo I and Carmo II
- Castelo I to IV

PROJECTORS

Built-in projectors: 6
Chiado II, Chiado III, Estrela I, Estrela II, Lapa I and Alfama II (Full HD, LCD Laser 5000 lumens)

SOUND SYSTEM

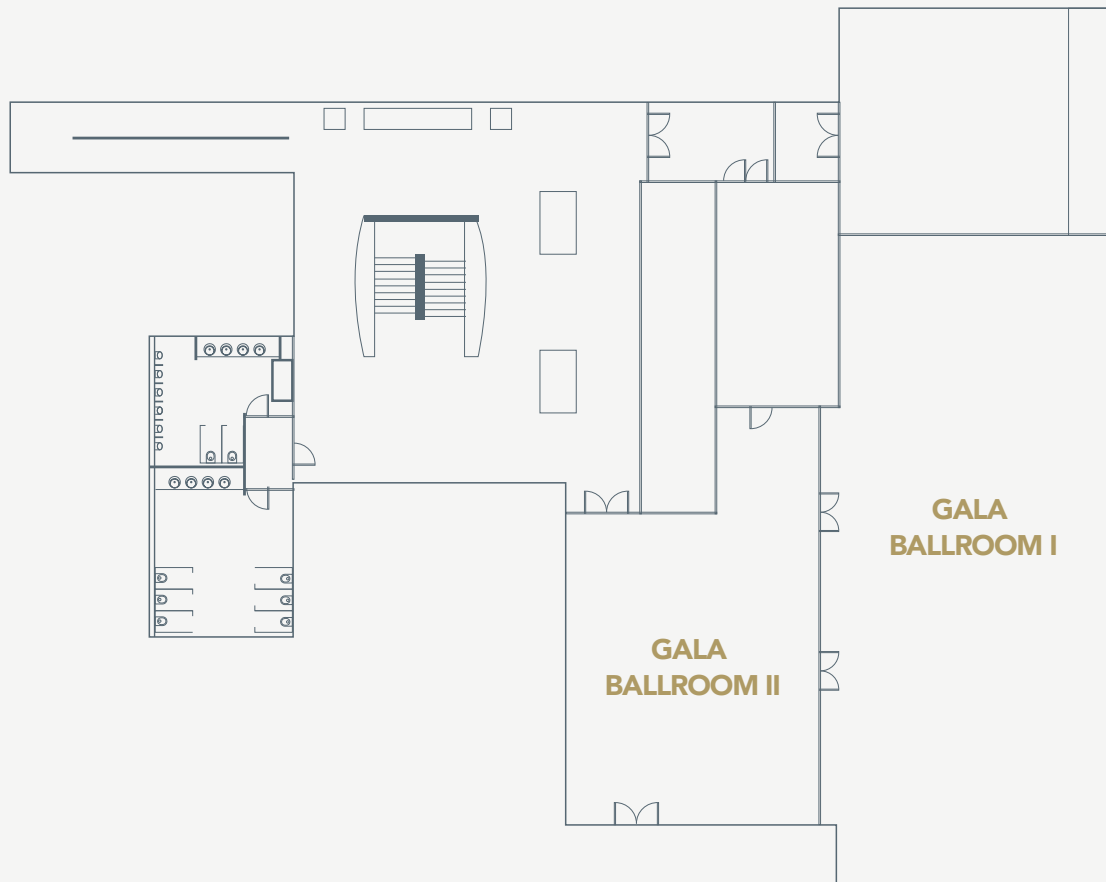
Voice and audio contents PA system available in all rooms:

Chiado I+II+III – 12 x 200W passive speakers + 6 x 320w subwoofers
Alfama I+II – 10 x 200W passive speakers + 5 x 320w subwoofers
Remaining rooms – Each with 2 x 75W passive speakers + 1 x 160W subwoofer

FLOOR - 1

ROOMS	AREA m ²	THEATRE	CLASSROOM		'U' SHAPE		BOARDROOM		BANQUET		CABARET		COCKTAIL with bistrot tables
			2 pax/ table	3 pax/ table	2 pax/ table	3 pax/ table	2 pax/ table	3 pax/ table	set menu	buffet	6 pax/ table	half round 5 pax	
CHIADO I	158	153	56	84	26	39	36	54	110	70	42	90	190
CHIADO II	99	110	42	63	24	36	28	42	60	50	30	45	120
CHIADO III	148	154	56	84	28	42	36	54	100	70	42	75	180
GRAÇA	20	-	-	-	6	9	8	12	-	-	-	-	-
LAPA I	56	70	18	27	14	21	20	30	30	30	18	25	-
LAPA II	40	30	14	21	10	15	12	18	30	30	-	-	-
ESTRELA I	72	56	20	30	16	24	20	30	30	-	18	30	85
ESTRELA II	72	56	20	30	16	24	20	30	30	-	18	30	85
ALFAMA I	187	200	60	90	32	48	40	60	140	120	72	100	225
ALFAMA II	132	100	40	60	24	36	32	48	80	60	36	65	160
CASTELO I	48	30	14	21	10	15	12	18	-	-	-	-	-
CASTELO II	48	30	14	21	10	15	12	18	-	-	-	-	-
CASTELO III	48	30	14	21	10	15	12	18	-	-	-	-	-
CASTELO IV	48	30	14	21	10	15	12	18	-	-	-	-	-
CARMO I	42	30	14	21	10	15	12	18	-	-	-	-	-
CARMO II	38	30	14	21	10	15	12	18	-	-	-	-	-
HALL -1	2142	COCKTAIL 1800 PAX											
CHIADO I+II	257	297	106	159	38	57	48	72	210	180	108	160	305
CHIADO II+III	247	286	98	147	32	48	48	72	200	140	84	115	295
CHIADO I+II+III	405	477	186	279	60	93	72	108	320	280	168	265	500
LAPA I+II	96	112	36	54	22	33	28	42	50	40	24	40	115
ALFAMA I+II	319	340	114	171	56	84	64	96	220	180	108	190	380
CASTELO I+II / III+IV	96	64	36	54	20	30	22	32	-	-	30	45	-
CASTELO I+II+III / CASTELO II+III+IV	144	110	56	84	32	48	34	50	-	-	48	70	130
CASTELO I+II+III+IV	192	150	76	114	40	60	42	62	-	-	66	90	180

FLOOR -2



DIMENSIONS

Total Area: 2.450 m² (gross floor area)
Length: 89m
Width: 29m
Height: 3,5m

ACCESSES

1 Central Stairway
1 Restaurant access Stairway
7 Lifts
2 Street doors

DOORS

Width: 90cm (each panel)

AIR CONDITIONING AND LIGHTING

Temperature control: Automatic
Natural Daylight: Yes
Blackout: Yes
Lighting control: Yes

SCREENS

Built-in Screens: N/A
Portable Standing Screens: N/A
Wall mount screens: N/A

LEDWALL

2 – Gala Ballroom I (4,5 mX 2,5 m FHD)
+ Gala Ballroom II (3 mX 1,75 m FHD)

PROJECTORS

Built-in projectors: N/A

SOUND SYSTEM

Voice and audio contents PA system: Yes
Gala Ballroom I+II- 16 x 200W passive speakers

FLOOR -2

ROOMS	AREA m ²	THEATRE	CLASSROOM		'U' SHAPE		BOARDROOM		BANQUET		CABARET		COCKTAIL with bistrot tables
			2 pax/ table	3 pax/ table	2 pax/ table	3 pax/ table	2 pax/ table	3 pax/ table	set menu	buffet	6 pax/ table	half round 5 pax	
GALA BALLROOM I	305	340	114	171	56	84	68	102	220	180	108	160	350
GALA BALLROOM II	120	100	40	60	22	33	36	54	70	50	30	45	140
GALA BALLROOM I+II	425	-	-	-	-	-	-	-	300	230	-	-	510