

# FACT SHEET



## \_WEATHER

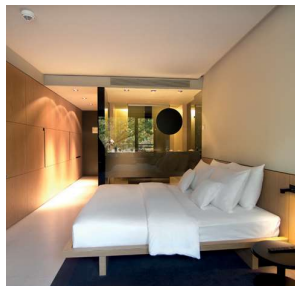
SPRING	▲ 18°C ▼ 8°C
SUMMER	▲ 28°C ▼ 11°C
AUTUMN	▲ 8°C ▼ 2°C
WINTER	▲ 4°C ▼ -1°C

## LOCATION

SANA Berlin Hotel is located in the west of the city of Berlin, close to the Tiergarten, the Zoologischer Garten, the famous "Gedächtnis-Kirche", the world famous department store KaDeWe and the shopping street of the former West Berlin – Kurfürstendamm – also known as Ku'damm, with numerous restaurants, shops, bars and cinemas. With excellent access to the public transport system, SANA Berlin Hotel is ideally situated for discovering the best that Berlin has to offer.

## SERVICES & FACILITIES

Multilingual staff | Air conditioning | Lobby Bar | Restaurant | Business Centre | Smoke detector | Lifts | Free Wifi | Laundry / Dry cleaning | 24-hour Reception | Indoor car park | Fitness Centre | Currency exchange | City tours | Information desk | Rent-a-car



## BEDROOM & SUITES

SANA Berlin Hotel offers a wide choice of accommodation for business or leisure travellers, be it for short or long stays. The hotel's 208 rooms, suites and apartments offer a contemporary, elegant and comfortable design.

153 Double Rooms | 1 Suite | 12 Junior Suites | 6 SANA Residence Studios | 18 SANA Residence 1-Bedroom | 18 SANA Residence 2-Bedrooms

Services & Facilities  
 Magnifying mirror | Hairdryer | Air conditioning with individual control | Wireless High Speed Access | Room service | Wake up service | Fire Safty System | Digital safe | Telephone | Smart TV | Mini bar | Rooms for guests with limited mobility (6 rooms) | Double glazing



## BARS & RESTAURANTS

At the SANA Berlin Hotel you can try international cuisine in the à la carte restaurant.

The lobby bar with an adjacent Mediterranean-style courtyard (patio) serves local beers and unique cocktails.



## MEETING ROOMS

6 Meeting Rooms with capacity of up to 130 people | 3 of the Meeting Rooms offer a panoramic view over Berlin.

Services & Facilities  
 Natural daylight | Wireless Internet in all Meeting Rooms and public areas | Blackout of rooms possible | Moveable walls | Modern audio-visual material | Air conditioning with individual control



## NEARBY

Places of Interest: Zoological Garden, Kurfürstendamm – also known as Ku'damm–, Kaiser Wilhelm museum, the famous Kaiser-Wilhelm-Gedächtnis-Kirche, KaDeWe department store

Cultural Venues: "The History of Berlin" interactive exhibition, Newton Museum (Helmut Newton Museum of Photography), Käthe-Kollwitz Museum

Cinemas: Astor Film Lounge  
 Theatres: "Theater des Westens"

Public Transport Network: S-Bahnhof Zoologischer Garten, U-Bahn Spichernstrasse (U9) and Augsburger Straße (U3)

Central railway station - 3.8 km  
 Exhibition Centre - 4.2 km  
 Berlin Olympic Stadium - 7.3 km  
 Brandenburg Gate - 4.7 km  
 Government Quarter - 6.0 km  
 Museum Insel - 6.2 km  
 Berlin Brandenburg Airport (BER) - 22 km